

# SPECIFICATIONS

<b>Operating weight</b>	<b>22,800 kg (50,265 lb)</b>
Operating weight includes coolant, lubricants, full fuel tank, cab, standard shoes, boom, arm, bucket and operator 75 kg (165 lb).	
<b>Bucket capacity</b>	<b>0.9-1.2 m<sup>3</sup> (1.18 -1.57 yd<sup>3</sup>)</b>

ENGINE	
Description	
Cummins EPA Tier 4 final / EU Stage IV, 6-cylinder straight Variable-Geometry Turbocharger (VGT), high pressure common rail, electronically controlled direct injection. Air cleaner: Cummins direct flow air filter. Cooling system: Air-to-air intercooler	
Emission rating	EPA Tier 4 final / EU Stage IV
Engine manufacturer	Cummins
Engine model	QSB 6.7
Aspiration	Variable-Geometry Turbocharger (VGT)
Charged air cooling	Aftercooler
Cooling fan drive	Viscous clutch
Displacement	6.7 L (1.8 gal) 6,700 cm <sup>3</sup> (409 in <sup>3</sup> )
Rated speed	2,100 rpm
Engine output - net (SAE J1349 / ISO 9249)	119 kW (160 hp)
Engine output - gross (SAE J1995 / ISO 14396)	129 kW (173 hp)
Maximum torque	800 N·m (590 lbf·ft) @1,500 rpm
Bore × Stroke	107 × 124 mm (4.2" × 4.9")

UNDERCARRIAGE	
Track shoe each side	49
Link pitch	190 mm (7.5")
Shoe width, triple grouser	600/700/800/900 mm (24"/28"/32"/35")
Bottom rollers each side	9
Top rollers each side	2

SWING SYSTEM	
Description	
Planetary gear reduction driven by high torque axial piston motor, with oil disk brake. Swing parking brake resets within five seconds after swing pilot controls return to neutral.	
Swing speed	11.4 rpm
Swing torque	78,200 N·m (57,677 lbf·ft)

HYDRAULIC SYSTEM	
Main pump	
Type	Two variable displacement piston pumps
Maximum flow	2 × 224 L/min (2 × 79.3 gal/min)
Pilot pump	
Type	Gear pump
Maximum flow	19 L/min (5 gal/min)
Relief valve setting	
Implement	34.3/37.3 MPa (4,975 / 5,410 psi)
Travel circuit	34.3 MPa (4,975 psi)
Slew circuit	25.5 MPa (3,698 psi)
Pilot circuit	3.9 MPa (566 psi)

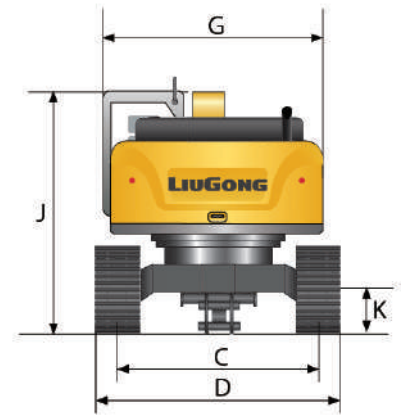
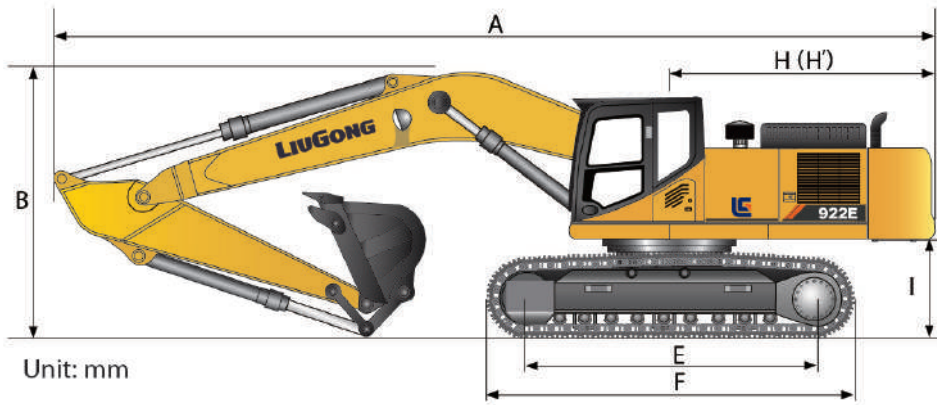
Hydraulic cylinders	
Boom Cylinder – Bore × Stroke	Φ120 × 1,335 mm (Φ4.7" × 4'5")
Stick Cylinder – Bore × Stroke	Φ135 × 1,490 mm (Φ5.3" × 4'11")
Bucket Cylinder – Bore × Stroke	Φ115 × 1,120 mm (Φ4.5" × 3'8")

ELECTRIC SYSTEM	
System Voltage	24 V
Batteries	2 × 12 V
Alternator	24 V - 70 A
Start motor	24 V - 7.8 kW (24 V - 10.5 hp)

SERVICE CAPACITIES	
Fuel tank	420 L (111 gal)
Engine oil	25 L (6.6 gal)
Final drive (each)	5.5 L (1.5 gal)
Swing drive	3.4 L (0.9 gal)
Cooling system	25 L (6.6 gal)
Hydraulic reservoir	210 L (55.5 gal)
Hydraulic system total	330 L (87.2 gal)
DEF tank	35 L (9.2 gal)

SOUND PERFORMANCE	
Interior Sound Power Level (ISO 6396)	69 dB(A)
Exterior Sound Power Level (ISO 6395)	100 dB(A)

DRIVE AND BRAKES	
Description	
2-speed axial piston motors with oil disk brakes. Steering controlled by two hand levers with pedals.	
Max. travel speed	High: 5.6 km/h (3.5 mph) Low: 3.3 km/h (2.1 mph)
Gradeability	35°/70%
Max. drawbar pull	220 kN (49,458 lbf)



### DIMENSIONS

Boom	5,710 mm (18' 9")	
Arm Options	2,915 mm (9' 7")	2,700 mm (8' 10")
A Shipping Length	9,570 mm (31' 5")	
B Shipping Height – Top of Boom	3,140 mm (10' 4")	
C Track Gauge	2,390 mm (7'10")	
D Undercarriage Width – with 600 mm Shoes	2,990 mm (9' 10")	
700 mm Shoes	3,090 mm (10' 2")	
800 mm Shoes	3,190 mm (10' 6")	
900 mm Shoes	3,290 mm (10' 10")	
E Length to Center of Rollers	3,650 mm (12')	
F Track Length	4,440 mm (14' 7")	
G Overall Width of Upper Structure	2,760 mm (9' 1")	
H Tail Swing Radius	2,780 mm (9' 1")	
I Counterweight Ground Clearance	1,070 mm (3' 6")	
J Overall Height of Cab	3,040 mm (10')	
K Min. Ground Clearance	440 mm (1' 5")	
L Track Shoe Width	600 mm (24")	

### BOOM DIMENSIONS

Boom	5,710 mm (18' 9")
Length	5,915 mm (19' 5")
Height	1,550 mm (5' 1")
Width	621 mm (2')
Weight	1,895 kg (4,178 lb)

Cylinder, piping and pin included.  
Boom cylinder pin excluded.

### ARM DIMENSIONS

Arm	2,915 mm (9' 7")	2,700 mm (8' 10")
Length	3,895 mm (12' 9")	3,685 mm (12' 1")
Height	790 mm (2' 7")	810 mm (2' 9")
Width	466 mm (1' 6")	466 mm (1' 6")
Weight	1,110 kg (2,447 lb)	1,073 kg (2,366 lb)

Cylinder, linkage and pin included.

### BUCKET SELECTION GUIDE

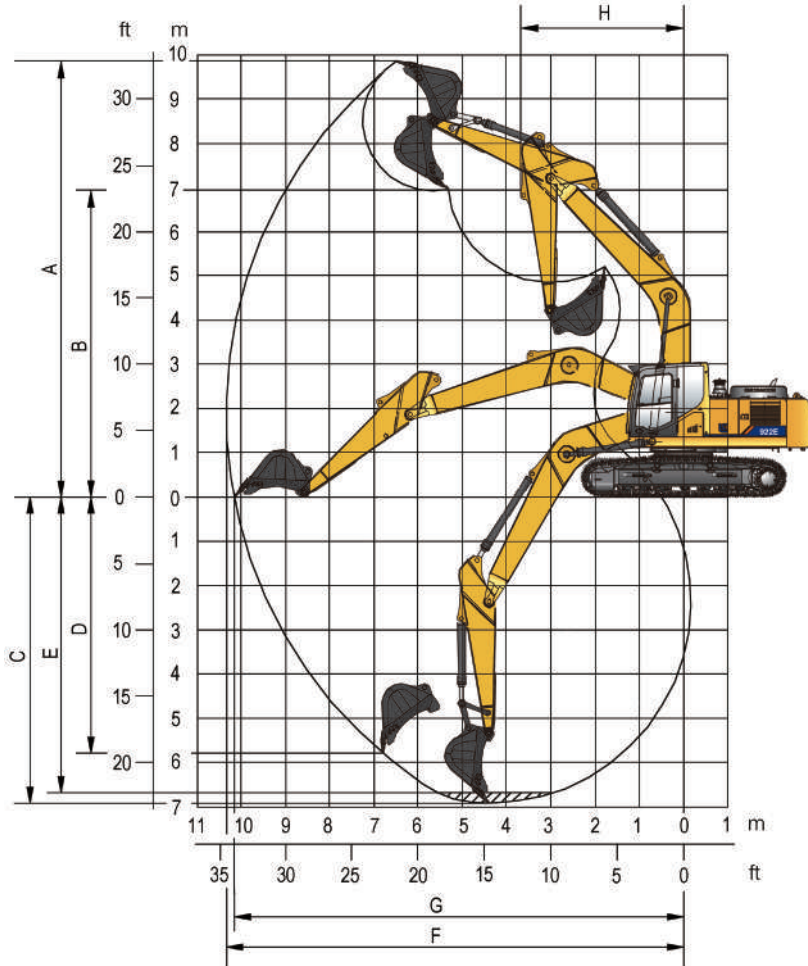
Bucket type	Capacity	Cutting width	Weight	Teeth pcs	5.7 m (18' 9") boom	
					2.9 m (9' 7") arm	2.7 m (8' 10") arm
Heavy duty	0.9 m <sup>3</sup> (1.18 yd <sup>3</sup> )	1,083 mm (3' 7")	786 kg (1,733 lb)	5	B	B
General purpose	0.95 m <sup>3</sup> (1.24 yd <sup>3</sup> )	1,268 mm (4' 2")	769 kg (1,695 lb)	5	B	B
Heavy duty	1 m <sup>3</sup> (1.31 yd <sup>3</sup> )	1,113 mm (3' 8")	887 kg (1,956 lb)	5	B	B
Wide and shallow bucket	1 m <sup>3</sup> (1.31 yd <sup>3</sup> )	1,227 mm (4')	850 kg (1,874 lb)	5	A	A
Super heavy duty	1 m <sup>3</sup> (1.31 yd <sup>3</sup> )	1,280 mm (4' 2")	905 kg (1,995 lb)	5	C	C
Heavy duty	1.1 m <sup>3</sup> (1.44 yd <sup>3</sup> )	1,330 mm (4' 4")	852 kg (1,878 lb)	6	B	B
Heavy duty	1.2 m <sup>3</sup> (1.57 yd <sup>3</sup> )	1,420 mm (4' 8")	915 kg (2,017 lb)	6	A	A

The recommendations are given as a guide only, based on typical operation conditions. Bucket capacity based on ISO 7451, heaped material with a 1:1 angle of repose.

Maximum material density:  
 A 1,200 - 1,300 kg/m<sup>3</sup> (2,023 - 2,191 lb/yd<sup>3</sup>): Coal, Caliche, Shale  
 B 1,400 - 1,600 kg/m<sup>3</sup> (2,360 - 2,697 lb/yd<sup>3</sup>): Wet earth and clay, limestone, sandstone  
 C 1,700 - 1,800 kg/m<sup>3</sup> (2,865-3,034 lb/yd<sup>3</sup>): Granite, wet sand, well blasted rock  
 D 1,900 kg/m<sup>3</sup> (3,203 lb/yd<sup>3</sup>): Wet mud, Iron ore  
 NA. Not applicable

## MACHINE WEIGHTS AND GROUND PRESSURE

Shoe width	Operating weight	Ground pressure	Overall width	Operating weight	Ground pressure	Overall width
	5.7 m (18' 9") boom, 2.9 m (9' 7") arm, 1.0 m <sup>3</sup> (1.3 yd <sup>3</sup> ) bucket, 4,000 kg (8,818 lb) counterweight			5.7 m (18' 9") boom, 2.7 m (8' 10") arm, 1.1 m <sup>3</sup> (1.44 yd <sup>3</sup> ) bucket, 4,000 kg (8,818 lb) counterweight		
600 mm (24")	22,800 kg (50,265 lb)	46.9 kPa (6.8 psi)	2,990 mm (9'10")	22,800 kg (50,265 lb)	46.9 kPa (6.8 psi)	2,990 mm (9'10")
700 mm (28")	23,080 kg (50,883 lb)	40.7 kPa (5.9 psi)	3,090 mm (10'2")	23,080 kg (50,883 lb)	40.7 kPa (5.9 psi)	3,090 mm (10'2")
800 mm (32")	23,370 kg (51,522 lb)	36 kPa (5.2 psi)	3,190 mm (10'6")	23,370 kg (51,522 lb)	36 kPa (5.2 psi)	3,190 mm (10'6")
900 mm (35")	23,650 kg (52,139 lb)	32.4 kPa (4.7 psi)	3,290 mm (10'10")	23,650 kg (52,139 lb)	32.4 kPa (4.7 psi)	3,290 mm (10'10")



## WORKING RANGE

Boom	5,710 mm (18' 9")	
Arm Options	2,915 mm (9' 7")	2,700 mm (8' 10")
A. Max. cutting height	9,945 mm (32' 8")	9,970 mm (32' 9")
B. Max. dumping height	7,170 mm (23' 6")	7,200 mm (23' 7")
C. Max. digging depth	6,562 mm (21' 6")	6,380 mm (20' 11")
D. Max. vertical wall digging depth	5,080 mm (16' 8")	5,040 mm (16' 6")
E. Max. digging depth, 2.44 m (8') level	6,390 mm (21')	
F. Max. digging reach	9,870 mm (32' 5")	9,735 mm (31' 11")
G. Max. digging reach on ground	9,685 mm (31' 9")	9,550 mm (31' 4")
H. Min. front swing radius	3,090 mm (10' 2")	3,120 mm (10' 3")
Bucket Digging Force (ISO)	Normal	140 kN (31,473 lbf)
	Power Boost	152 kN (34,171 lbf)
Arm Digging Force (ISO)	Normal	97 kN (21,806 lbf)
	Power Boost	105 kN (23,605 lbf)
Bucket Capacity	1.0 m <sup>3</sup> (1.31 yd <sup>3</sup> )	1.1 m <sup>3</sup> (1.44 yd <sup>3</sup> )
Bucket Tip Radius	1,450 mm (4' 9")	1,450 mm (4' 9")

Lifting capacity at the arm end without bucket.  
For lifting capacity including bucket, weight of the bucket or the bucket with quick coupler must be deducted from the lifting capacities.

Lifting capacities are based on the machine standing on a firm, uniform supporting surface.



Rating over - front (Cf) Rating over - side (Cs)

- Do not attempt to lift or hold any load that is greater than these rated values at their specified load radius and height. Weight of all accessories must be deducted from the above lifting capacities.
- The rated loads are in compliance with ISO 10567 Hydraulic Excavator Lift Capacity Rating Standard. They do not exceed 87% of hydraulic lifting capacity or 75% tipping load.
- Ratings at bucket lift hook.

- Lifting capacities are based on machine standing on level, firm and uniform ground.
- \*Indicates the load is limited by hydraulic capacity rather than tipping capacity.
- Operator should be fully acquainted with the Operator's and Maintenance Instructions before operating this machine and rules for the safe operation of equipment should be adhered to at all times.

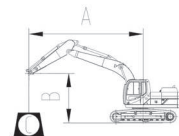
### LIFTING CAPACITY (METRIC)

#### 922E with 600 mm shoes, 2,915 mm arm

A: Reach from swing center  
B: Bucket hook height  
C: Lifting capacity  
Cf: Rating over front  
Cs: Rating over side

#### Conditions

Boom length: 5,710 mm  
Arm length: 2,915 mm  
Bucket: None  
Counterweight: 4,000 kg  
Shoes: 600 mm triple grouser  
Unit: kg



#### A (Unit: m)

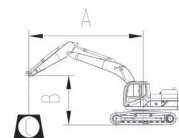
B (m)	A (Unit: m)														A (m)		
	3		4		5		6		7		8		MAX REACH				
7							5,340*	5,340*							5,050*	5,050*	6.6
6							5,420*	5,420*	5,510*	4,650					5,360*	4,460	7.2
5					6,070*	6,070*	5,780*	5,780*	5,650*	4,610					4,670*	3,920	7.8
4			8,140*	8,140*	7,010*	7,010*	6,360*	5,650	5,960*	4,550	5,670*	3,740			5,670*	3,740	8.0
3			10,100*	9,680	8,100*	7,070	7,030*	5,510	6,380*	4,460	5,710	3,700			5,510	3,560	8.2
2			11,880*	9,220	9,180*	6,820	7,710*	5,340	6,820*	4,360	5,650	3,640			5,150*	3,400	8.4
1			13,090*	8,940	10,060*	6,630	8,310*	5,210	6,760	4,280	5,610	3,580			5,420	3,480	8.2
0	8,210*	8,210*	13,670*	8,810	10,640*	6,500	8,340	5,130	6,690	4,210	5,570	3,540			5,380	3,450	8.2
- 1	11,670*	11,670*	13,770*	8,760	10,890*	6,420	8,270	5,070	6,650	4,170					5,750	3,660	7.8
- 2	15,750*	13,820	13,510*	8,770	10,820*	6,420	8,270	5,050	6,650	4,170					6,170	3,910	7.4
- 3	16,400*	13,970	12,840*	8,850	10,390*	6,460	8,310	5,090							5,150*	4,380	7.0
- 4	14,670*	14,180	11,630*	8,980	9,420*	6,570									7,900*	5,420	5.8

#### 922E with 600 mm shoes, 2,700 mm arm

A: Reach from swing center  
B: Bucket hook height  
C: Lifting capacity  
Cf: Rating over front  
Cs: Rating over side

#### Conditions

Boom length: 5,710 mm  
Arm length: 2,700 mm  
Bucket: None  
Counterweight: 4,000 kg  
Shoes: 600 mm triple grouser  
Unit: kg



#### A (Unit: m)

B (m)	A (Unit: m)														A (m)		
	3		4		5		6		7		8		MAX REACH				
7							5,610*	5,610*							5,110*	5,110*	6.4
6					5,690*	5,690*	5,650*	5,650*	5,630*	4,610					5,630*	4,610	7.0
5					6,340*	6,340*	6,010*	5,760	5,860*	4,590					4,920*	4,050	7.6
4			8,610*	8,610*	7,300*	7,300	6,570*	5,630	6,150*	4,530	4,420*	3,720			4,420*	3,720	8.0
3			10,600*	9,630	8,400*	7,050	7,230*	5,500	6,550*	4,440	5,710	3,690			4,550*	3,550	8.2
2			12,320*	9,220	9,460*	6,820	7,900*	5,360	6,860	4,360	5,650	3,640			5,460	3,510	8.2
1			13,400*	8,980	10,280*	6,650	8,460	5,230	6,760	4,280	5,610	3,590			5,400*	3,480	8.2
0			13,850*	8,890	10,800*	6,530	8,360	5,150	6,710	4,230	5,570	3,560			5,570	3,560	8.0
- 1	11,720*	11,720*	13,850*	8,850	10,970	6,480	8,310	5,110	6,670	4,190					5,960	3,790	7.6
- 2	16,370*	14,020	13,470*	8,890	10,850*	6,480	8,310	5,110	6,690	4,210					6,440	4,070	7.2
- 3	16,090*	14,170	12,710*	8,970	10,310*	6,530	8,360	5,150							7,320	4,590	6.6
- 4	14,190*	14,190*	11,320*	9,100	9,150*	6,650									7,940*	5,750	5.6

Lifting capacity at the arm end without bucket.  
For lifting capacity including bucket, weight of the bucket or the bucket with quick coupler must be deducted from the lifting capacities.

Lifting capacities are based on the machine standing on a firm, uniform supporting surface.



Rating over - front (Cf)



Rating over - side (Cs)

1. Do not attempt to lift or hold any load that is greater than these rated values at their specified load radius and height. Weight of all accessories must be deducted from the above lifting capacities.
2. The rated loads are in compliance with ISO 10567 Hydraulic Excavator Lift Capacity Rating Standard. They do not exceed 87% of hydraulic lifting capacity or 75% tipping load.
3. Ratings at bucket lift hook.

4. Lifting capacities are based on machine standing on level, firm and uniform ground.
5. \*Indicates the load is limited by hydraulic capacity rather than tipping capacity.
6. Operator should be fully acquainted with the Operator's and Maintenance Instructions before operating this machine and rules for the safe operation of equipment should be adhered to at all times.

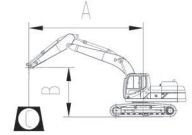
## LIFTING CAPACITY (METRIC)

### 922E with 800 mm shoes, 2,915 mm arm

A: Reach from swing center  
B: Bucket hook height  
C: Lifting capacity  
Cf: Rating over front  
Cs: Rating over side

### Conditions

Boom length: 5,710 mm  
Arm length: 2,915 mm  
Bucket: None  
Counterweight: 4,000 kg  
Shoes: 800 mm triple grouser  
Unit: kg



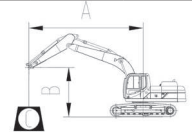
B (m)	A (Unit: m)														A (m)	
	3		4		5		6		7		8		MAX REACH			
7							5,340*	5,340*						5,050*	5,050*	6.6
6							5,420*	5,420*	5,510*	4,820				5,360*	4,460	7.2
5					6,070*	6,070*	5,780*	5,780*	5,650*	4,780				4,670*	3,920	7.8
4			8,140*	8,140*	7,010*	7,010*	6,360*	5,840	5,960*	4,690	5,670*	3,860	5,670*	3,740	8.0	
3			10,100*	10,000	8,100*	7,300	7,030*	5,690	6,380*	4,610	5,900	3,820	5,510	3,560	8.2	
2			11,880*	9,550	9,180*	7,050	7,710*	5,530	6,820*	4,510	5,840	3,760	5,150*	3,400	8.4	
1			13,090*	9,270	10,060*	6,860	8,310*	5,400	6,980	4,420	5,800	3,720	5,420	3,480	8.2	
0	8,210*	8,210*	13,670*	9,130	10,640*	6,730	8,610	5,300	6,920	4,360	5,760	3,690	5,380	3,450	8.2	
- 1	11,670*	11,670*	13,770*	9,070	10,890*	6,670	8,560	5,260	6,880	4,320			5,750	3,660	7.8	
- 2	15,750*	14,320	13,510*	9,100	10,820*	6,650	8,550	5,250	6,880	4,320			6,170	3,910	7.4	
- 3	16,400*	14,470	12,840*	9,180	10,390*	6,710	8,590	5,280					5,150*	4,380	7.0	
- 4	14,670*	14,670*	11,630*	9,310	9,420*	6,800							7,900*	5,420	5.8	

### 922E with 800 mm shoes, 2,700 mm arm

A: Reach from swing center  
B: Bucket hook height  
C: Lifting capacity  
Cf: Rating over front  
Cs: Rating over side

### Conditions

Boom length: 5,710 mm  
Arm length: 2,700 mm  
Bucket: None  
Counterweight: 4,000 kg  
Shoes: 800 mm triple grouser  
Unit: kg



B (m)	A (Unit: m)														A (m)	
	3		4		5		6		7		8		MAX REACH			
7							5,610*	5,610*						5,110*	5,110*	6.4
6						5,690*	5,690*	5,650*	5,650*	5,630*	4,780			5,630*	4,610	7.0
5						6,340*	6,340*	6,010*	5,940	5,860*	4,750			4,920*	4,050	7.6
4			8,610*	8,610*	7,300*	7,300*	6,570*	5,820	6,150*	4,690	4,420*	3,840	4,420*	3,720	8.0	
3			10,600*	9,940	8,400*	7,280	7,230*	5,670	6,550*	4,590	5,900	3,810	4,550*	3,550	8.2	
2			12,320*	9,550	9,460*	7,050	7,900*	5,530	6,960*	4,510	5,840	3,760	5,460	3,510	8.2	
1			13,400*	9,310	10,280*	6,880	8,470*	5,420	7,000	4,440	5,800	3,730	5,400*	3,480	8.2	
0			13,850*	9,210	10,800*	6,780	8,640	5,340	6,940	4,380	5,760	3,700	5,570	3,560	8.0	
- 1	11,720*	11,720*	13,850*	9,180	10,980*	6,730	8,600	5,300	6,900	4,360			5,960	3,790	7.6	
- 2	16,370*	14,520	13,470*	9,210	10,850*	6,730	8,600	5,300	6,920	4,360			6,440	4,070	7.2	
- 3	16,090*	14,650	12,710*	9,280	10,310*	6,780	8,480*	5,340					7,320	4,590	6.6	
- 4	14,190*	14,190*	11,320*	9,430	9,150*	6,880							7,940*	5,750	5.6	

Lifting capacity at the arm end without bucket.  
 For lifting capacity including bucket, weight of the bucket or the bucket with quick coupler must be deducted from the lifting capacities.  
 Lifting capacities are based on the machine standing on a firm, uniform supporting surface.



Rating over - front (Cf)    Rating over - side (Cs)

1. Do not attempt to lift or hold any load that is greater than these rated values at their specified load radius and height. Weight of all accessories must be deducted from the above lifting capacities.
2. The rated loads are in compliance with ISO 10567 Hydraulic Excavator Lift Capacity Rating Standard. They do not exceed 87% of hydraulic lifting capacity or 75% tipping load.
3. Ratings at bucket lift hook.

4. Lifting capacities are based on machine standing on level, firm and uniform ground.
5. \*Indicates the load is limited by hydraulic capacity rather than tipping capacity.
6. Operator should be fully acquainted with the Operator's and Maintenance Instructions before operating this machine and rules for the safe operation of equipment should be adhered to at all times.

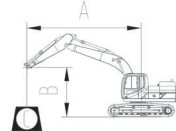
**LIFTING CAPACITY (IMPERIAL)**

**922E with 24" shoes, 9'7" arm**

A: Reach from swing center  
 B: Bucket hook height  
 C: Lifting capacity  
 Cf: Rating over front  
 Cs: Rating over side

**Conditions**

Boom length: 18'9"  
 Arm length: 9'7"  
 Bucket: None  
 Counterweight: 8,818 lb  
 Shoes: 24" triple grouser  
 Unit: lb



**A (Unit: ft)**

B (ft)	5		10		15		20		25		MAX REACH		A (ft)
	Cf	Cs	Cf	Cs	Cf	Cs	Cf	Cs	Cf	Cs	Cf	Cs	
20							11,940*	11,940*			12,200*	10,253	23
15					14,790*	14,790*	13,203*	12,389	12,619*	8,944	10,848*	8,412	26
10					19,263*	17,709	15,264*	11,906	13,478*	8,745	12,100	7,828	27
5					23,505*	16,699	17,427*	11,424	13,320	8,516	11,935	7,676	27
0			18,798*	18,798*	25,919*	16,150	17,980	11,084	13,130	8,346	12,433	7,936	26
- 5	19,916*	19,916*	30,857*	29,596	26,375*	16,003	17,821	10,947	13,086	8,306	13,075	8,300	25
- 10	32,222*	32,222*	35,577*	30,006	24,940*	16,141	17,923	11,036			15,685	9,819	22
- 15			28,875*	28,875*	20,487*	16,615					17,678*	14,054	17

**922E with 24" shoes, 8'10" arm**

A: Reach from swing center  
 B: Bucket hook height  
 C: Lifting capacity  
 Cf: Rating over front  
 Cs: Rating over side

**Conditions**

Boom length: 18'9"  
 Arm length: 8'10"  
 Bucket: None  
 Counterweight: 8,818 lb  
 Shoes: 24" triple grouser  
 Unit: lb



**A (Unit: ft)**

B (ft)	5		10		15		20		25		MAX REACH		A (ft)
	Cf	Cs	Cf	Cs	Cf	Cs	Cf	Cs	Cf	Cs	Cf	Cs	
20							12,455*	12,455*			11,377*	10,158	23
15					15,535*	15,535*	13,677*	12,323	13,057*	8,893	13,057*	8,884	25
10					20,061*	17,647	15,718*	11,882	13,544	8,730	12,768	8,247	26
5					24,177*	16,739	17,819*	11,446	13,322	8,529	11,649*	7,682	27
0					26,318*	16,276	18,040	11,148	13,161	8,384	12,464	7,971	26
- 5	20,604*	20,604*	31,668*	30,011	26,483*	16,175	17,914	11,040			13,869	8,785	24
- 10			34,902*	30,418	24,713*	16,333	18,046	11,155			16,832	10,498	21
- 15			27,552*	27,552*	19,490*	16,836					17,996*	15,423	16



Lifting capacity at the arm end without bucket.

For lifting capacity including bucket, weight of the bucket or the bucket with quick coupler must be deducted from the lifting capacities.

Lifting capacities are based on the machine standing on a firm, uniform supporting surface.



Rating over - front (Cf)



Rating over - side (Cs)

1. Do not attempt to lift or hold any load that is greater than these rated values at their specified load radius and height. Weight of all accessories must be deducted from the above lifting capacities.
2. The rated loads are in compliance with ISO 10567 Hydraulic Excavator Lift Capacity Rating Standard. They do not exceed 87% of hydraulic lifting capacity or 75% tipping load.
3. Ratings at bucket lift hook.

4. Lifting capacities are based on machine standing on level, firm and uniform ground.
5. \*Indicates the load is limited by hydraulic capacity rather than tipping capacity.
6. Operator should be fully acquainted with the Operator's and Maintenance Instructions before operating this machine and rules for the safe operation of equipment should be adhered to at all times.

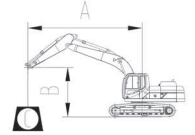
### LIFTING CAPACITY (IMPERIAL)

#### 922E with 32" shoes, 9'7" arm

A: Reach from swing center  
B: Bucket hook height  
C: Lifting capacity  
Cf: Rating over front  
Cs: Rating over side

#### Conditions

Boom length: 18'9"  
Arm length: 9'7"  
Bucket: None  
Counterweight: 8,818 lb  
Shoes: 32" triple grouser  
Unit: lb



#### A (Unit: ft)

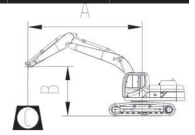
B (ft)	A (Unit: ft)										A (ft)		
	5	10		15		20		25		MAX REACH			
20							11,940*	11,940*			12,200*	10,253	23
15					14,790*	14,790*	13,203*	12,793	12,619*	9,252	10,848*	8,412	26
10					19,263*	18,295	15,264*	12,310	13,478*	9,054	12,100	7,828	27
5					23,505*	17,288	17,427*	11,829	13,763	8,824	11,935	7,676	27
0			18,798*	18,798*	25,919*	16,739	18,584	11,490	13,573	8,655	12,433	7,936	26
- 5	19,916*	19,916*	30,857*	30,665	26,375*	16,589	18,423	11,351	13,531	8,615	13,075	8,300	25
- 10	32,222*	32,222*	35,577*	31,078	24,940*	16,728	18,527	11,439			15,685	9,819	22
- 15			28,875*	28,875*	20,487*	17,204					17,678*	14,054	17

#### 922E with 32" shoes, 8'10" arm

A: Reach from swing center  
B: Bucket hook height  
C: Lifting capacity  
Cf: Rating over front  
Cs: Rating over side

#### Conditions

Boom length: 18'9"  
Arm length: 8'10"  
Bucket: None  
Counterweight: 8,818 lb  
Shoes: 32" triple grouser  
Unit: lb



#### A (Unit: ft)

B (ft)	A (Unit: ft)												A (ft)		
	5		10		15		20		25		MAX REACH				
20	Cf	Cs	Cf	Cs	Cf	Cs	Cf	Cs	Cf	Cs	Cf	Cs	11,377*	10,158	23
15					15,535*	15,535*	13,677*	12,729	13,057*	9,201	13,057*	8,884	25		
10					20,061*	18,234	15,718*	12,286	13,822*	9,038	12,768	8,247	26		
5					24,177*	17,325	17,819*	11,851	13,767	8,838	11,649*	7,682	27		
0					26,318*	16,862	18,641	11,554	13,606	8,692	12,464	7,971	26		
- 5	20,604*	20,604*	31,668*	31,082	26,483*	16,761	18,518	11,446			13,869	8,785	24		
- 10			34,902*	31,488	24,713*	16,922	18,295*	11,558			16,832	10,498	21		
- 15			27,552*	27,552*	19,490*	17,425					17,996*	15,423	16		

# STANDARD EQUIPMENT

## ENGINE SYSTEM

- Cummins diesel engine, turbocharged, inline 6-cylinder, 4 stroke, water cooled
- Auto-idle speed control
- Air filter with pre-cleaner
- Engine oil filter
- Pre-filter with water separator
- Radiator, oil cooler and intercooler
- IPC (Intelligent Power Control) System
- Engine overheating prevention system

## DRIVETRAIN

- Hydraulic motor, one-piece two-gear piston and reducer
- 2-speed travel system with automatic shift

## SWING SYSTEM

- High-torque piston swing motor with integral spring set and automatic hydraulic release swing brake

## HYDRAULIC SYSTEM

- Main pump: two variable displacement piston pumps, ready for PTO
- Pilot pump: gear
- Cylinders: boom, stick, bucket
- Power boost function
- Boom and arm regeneration circuits
- Pilot oil filter
- Load holding valve
- Pilot control shut-off lever

- Hose burst safety valves, prevention of boom or arm supply dropped when the lines split (2 mounted on boom cylinders, 1 on arm cylinder)
- 6-working mode selection system: Power, Economy, Fine, Lifting, Breaker, Attachment

## DIGGING EQUIPMENT

- 5,710 mm (18' 9") boom
- 2,915 mm (9' 7") arm
- 1 m<sup>3</sup> (1.31 yd<sup>3</sup>) (SAE, heaped) bucket

## OPERATOR STATION

- Pressurized and sealed cab with all-around visibility, large roof window with slide sliding sun visor, front window wiper and removable lower window
- Roll-Over Protective System (ROPS)
- Skylight rooftop
- Air conditioner, heater, defroster
- Swing parking brake
- AM/FM radio with MP3 audio jack
- Glass-breaking hammer
- Ashtray, cigarette lighter
- Cup holder
- Floor mat
- Storage box
- Front glass lower guard
- Fire extinguisher
- Rear view mirrors
- One key for all locks

## INSTRUMENTATION

- Color LCD monitor with alarms, filter/fluid change, fuel rate, water temperature, work mode, fault code, working hour, etc.
- Fuel gauge
- Hydraulic oil level gauge

## ELECTRICAL

- Alternator 70 A
- Dual batteries 12 V
- Working lights, 1 frame mounted, 2 boom mounted
- Rotating beacon
- Starting, 24 V

## UNDERCARRIAGE

- 600 mm (24") track-shoes with triple grousers
- 2 piece track-guards (each side)
- Towing eye on base frame

## GUARDS

- Belly guards
- Cover plate under travel frame
- Track shields

## OTHER STANDARD EQUIPMENT

- 4,000 kg (8,818 lb) counterweight
- Maintenance tool kit
- Maintenance parts package

# OPTIONAL EQUIPMENT

## ENGINE SYSTEM

- Electrical fuel refilling pump

## HYDRAULIC SYSTEM

- Control pattern change valve
- Hydraulic lines:
  - Breaker & shear
  - Slope & rotator
  - Grapple
  - Oil drain line
  - Quick coupler
- Hydraulic quick coupler
- Overloading valve
- Cushion valve

## OPERATOR STATION

- Power outlet 24 V to 12 V converter
- 4 LED cab top lights
- Working lights on cab (2 on top-front cab)
- Rear view camera 5.7" monitor
- Air suspension seat
- Control joysticks with 2 switch & 1 proportional
- Safety net for front window
- Rain visor
- Travel alarm
- Operation protection guard (included cab front and top guard, bar)
- Operation protection screen (on cab front, net)
- Operation protection screen (front-lower)

## UPPER STRUCTURE

- Upper frame protection (wire)
- Belly guard and 8 mm thickness platform bottom plate
- Bucket cylinder guard

## UNDERCARRIAGE

- 700 mm (28"), 800 mm (32"), 900 mm (35") track-shoes with triple grousers
- 3 piece track-guards (each side)

## DIGGING EQUIPMENT

- Arm: 2,700 mm (8' 10")
- Bucket: 0.9/0.95/1.0/1.1/1.2 m<sup>3</sup> (1.18/1.24/1.31/1.44/1.57 yd<sup>3</sup>)
- Hydraulic breaker
- Ripper shank



## Guangxi LiuGong Machinery Co., Ltd.

No. 1 Liutai Road, Liuzhou, Guangxi, PR China 545007  
T: +86 772 388 6124 E: overseas@liugong.com  
www.liugong.com

LG-SP-922E-T4F-WW-A4-07072017-ENG

Like and follow us:



The LiuGong series of logos herein, including but not limited to word marks, device marks, letter of alphabet marks and combination marks, as the registered trademarks of Guangxi LiuGong Group Co., Ltd. are used by Guangxi LiuGong Machinery Co., Ltd. with legal permission, and shall not be used without permission. Specifications and designs are subject to change without notice. Illustrations and pictures may include optional equipment and may not include all standard equipment. Equipment and options varies by regional availability.